

2INDP119B



- Easy installation
- Compact and ergonomically
- Fully integrated power supply



1U 19" LCD-Monitor Drawer

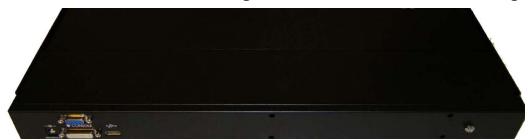
Features:

- Various mounting slides for any standard (800-1000mm) 1U (19") Rack
- Integrated Teleskope-Rails
- Front panel lockable with practical knurled screws
- RGB analog LCD Display up to 1280x1024 with 300 cd/m² brightness (19")
- Fully integrated power supply

Specifications:

Casing:

- RoHS conform
- Heavy-duty Steel
- Casecolor RAL 9005 (RAL 7035 on request)
- Connection 3x34X'FE" for w.1xVGA,3xDVI,3zWUD"tqt"qr vqp"Vqwej "Uetggp+



- 1U Drawercase 600mm deep
- RoHS conform
- für all Racks fom 800-1000mm



Technical Specification LCD Monitor

Display Size:	482,6mm (19")
Resolution:	Maximum 1280x1024
Number of colors::	16,2 M.
Optical frequenz:	H: 30,0KHz – 70,0KHz V: 55,0KHz – 75,0KHz
Viewing angle:	H: 140° / V: 130°
Bandwidth:	80MHz
Brightness:	300 cd/m ²
Contrast Ratio:	700:1
Response time:	6ms
Pixel pitch:	0,294mm(H) x 0,294mm(V)
Backlights:	LED
Power Supply:	Input: 100V – 240V AC, 50Hz – 60HZ Output: DC 12V, 4,2A

